

Carefully read the instructions in this guide before using the device and keep it for future reference.

# Hisense Quick Start Guide

EN

2.1 ch Soundbar With Wireless Subwoofer  
Model: HS215

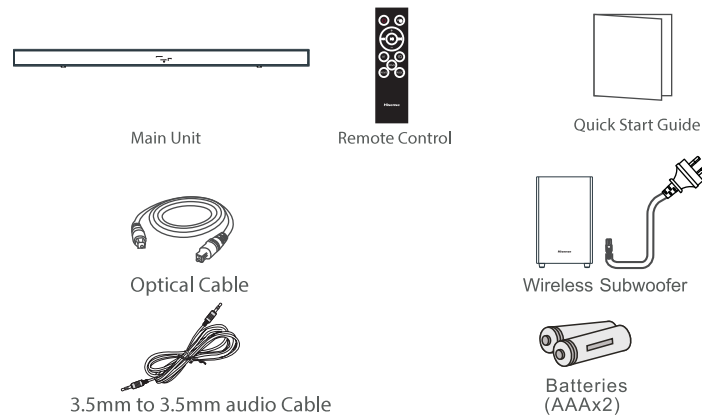
## 1. Specifications

**Sound Bar**  
Power Requirements:  
AC 100-240V~ 50/60Hz  
Sound Bar Output Power: 20W x 2  
Subwoofer Output Power: 60W  
Audio Input Sensitivity: 500mV  
Sound Bar Dimension (W x H x D):  
980 x 55 x 75 mm (38.5 x 2.1 x 2.9 inch)  
Subwoofer Dimension (W x H x D):  
210 x 325 x 248 mm ( 8.3 x 12.8 x 9.7 inch)

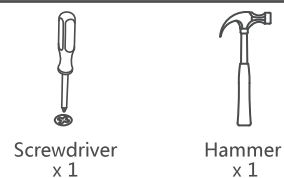
Frequency Response: 40Hz - 20kHz  
Sound Bar Impedance: 6Ω x 2  
Subwoofer Impedance: 4Ω  
Sound Bar Net Weight : 1.9kg  
Subwoofer Net Weight : 4.8kg

**Remote Control**  
Battery Type: 2xAAA

## 2. Package Contents



## 3. Required Tools



## 5. General Operation

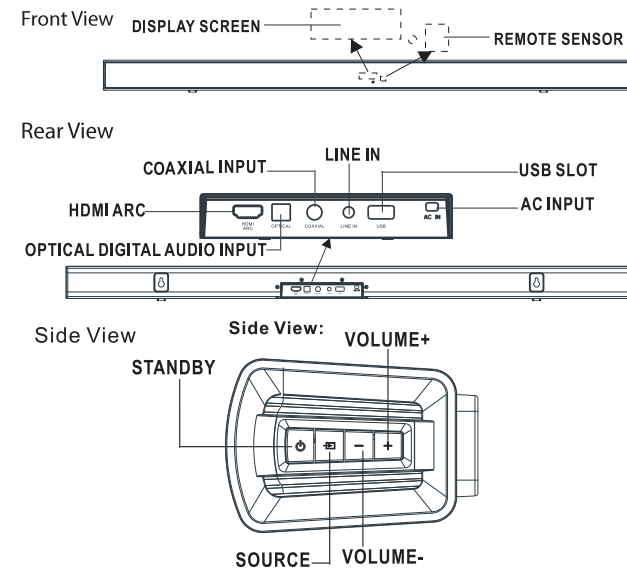
### Standby/ON

- When you first connect the unit to the main socket, the unit will be in STANDBY mode.
- Press the **ON** button on the remote control or on the unit to switch the main unit ON or OFF.
- Disconnect the main plug from the main socket if you want to switch the unit off completely.
- If a TV or an external device with ARC function is connected, the unit will switch on automatically when the TV or the external device is switched on.
- When there is no input signal from the unit in over 15 minutes, then it will automatically switch to Standby mode.

### Adjust the Volume

- Press the VOL+ / VOL- buttons to adjust the volume.
- If you wish to turn the sound off, press the MUTE button on the remote control. Press the MUTE button again or press the VOL+ / VOL- buttons on the unit or on the remote control to resume normal listening.

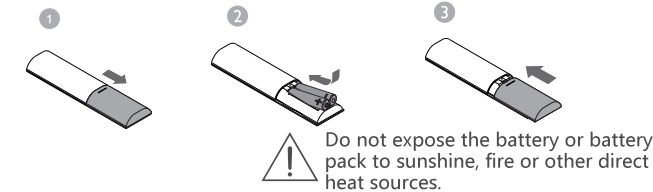
## 4. Product Diagram



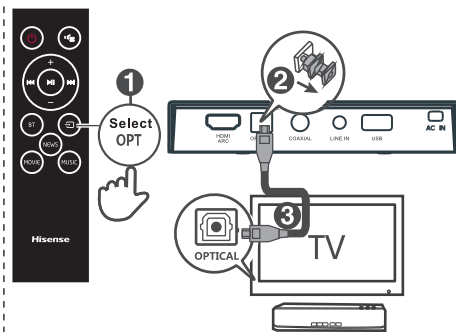
## Remote Control

	Turn on / turn off
	Mute or resume the sound
	Select the play function OPT, BT, HDMI ARC, COAXIAL, LINE IN, USB
	(* In USB/Bluetooth mode:) Start / pause play Activate Bluetooth pairing Previous track / Next track
	Increase the volume. Decrease the volume.
	Select a preset sound effect
	Switch to bluetooth mode

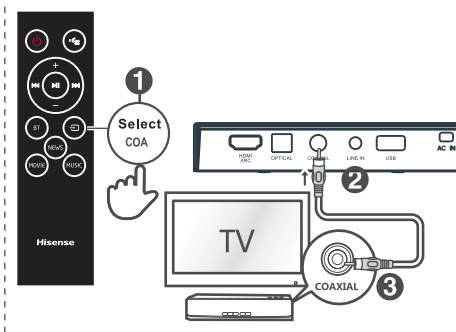
### Replace the Remote Control Battery:



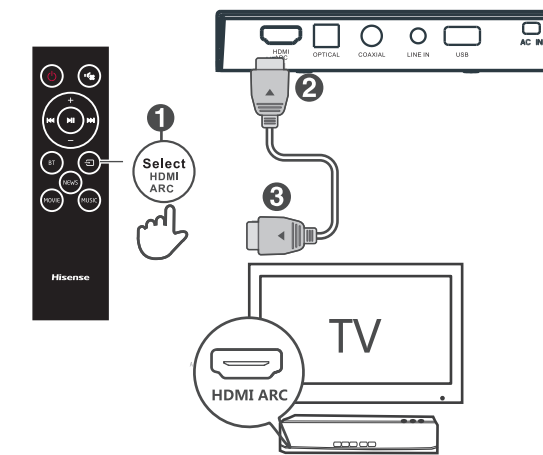
## 6. OPTICAL Operation



## 7. COAXIAL Operation

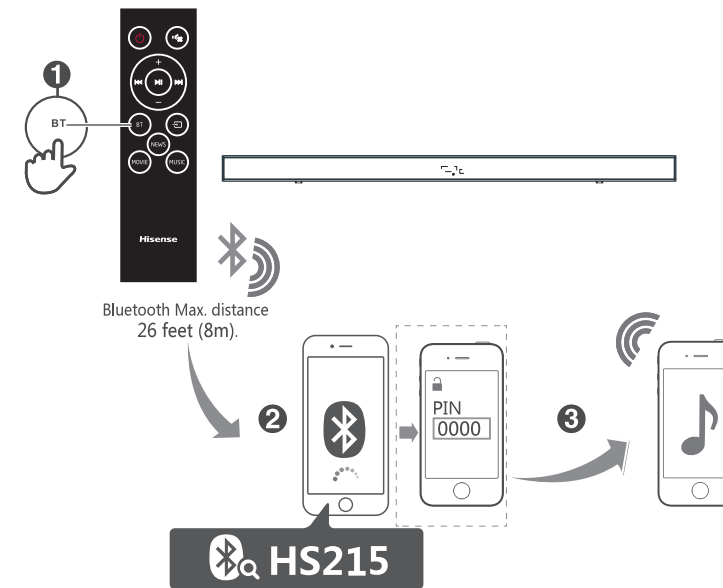


## 8. HDMI ARC Operation

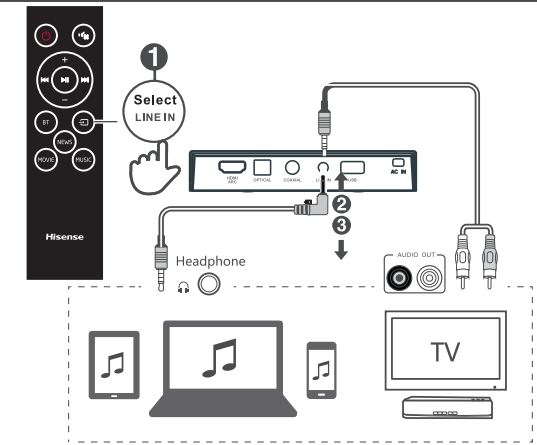


While in OPTICAL / COAXIAL / HDMI ARC mode, if there's no sound output and the corresponding status mode was displayed on the unit, you may need to activate PCM Signal output on your source device (eg. TV, DVD or Blu-ray player).

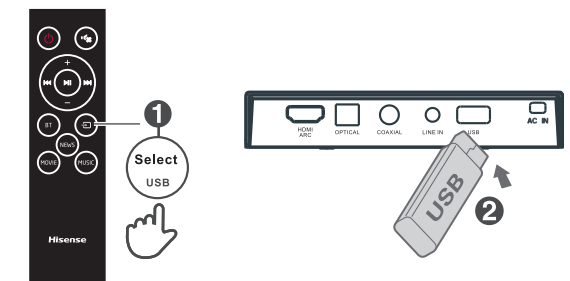
## 10. Bluetooth (BT) Operation



## 9. LINE IN Operation



## 11. USB Operation



## 12. Subwoofer connection to power

